

450AXP.26

❖ = Mmax 382 kNm

⚙ = Pmax 13500 kg
⚙ = Pmax 1530 kg



FASS
GRU IDRAULICHE

0°

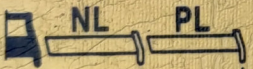
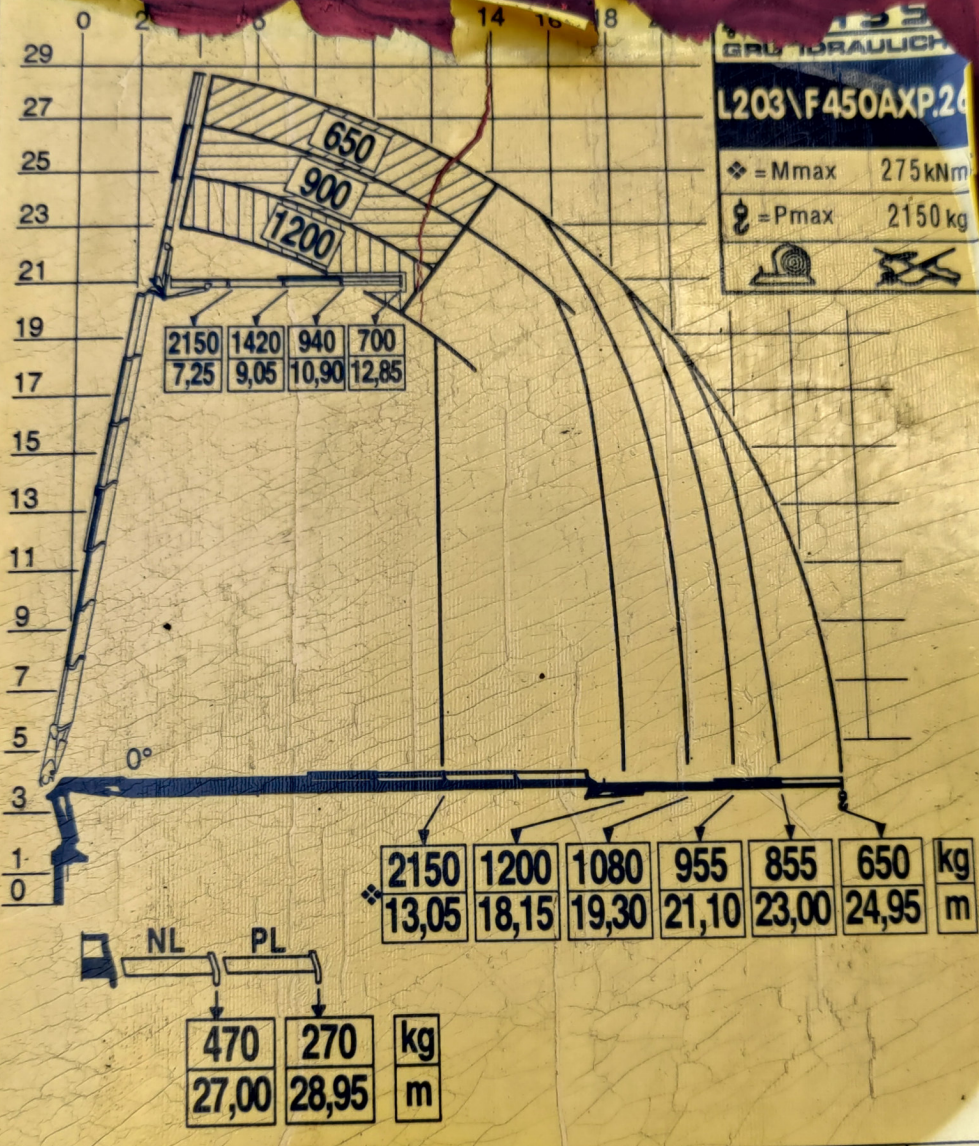


S (70) T (50)

GRU HYDRAULIC
L203\F450AXP.26

◆ = Mmax 275 kNm

⊗ = Pmax 2150 kg



kg NL (27) PL (18)

DE 5