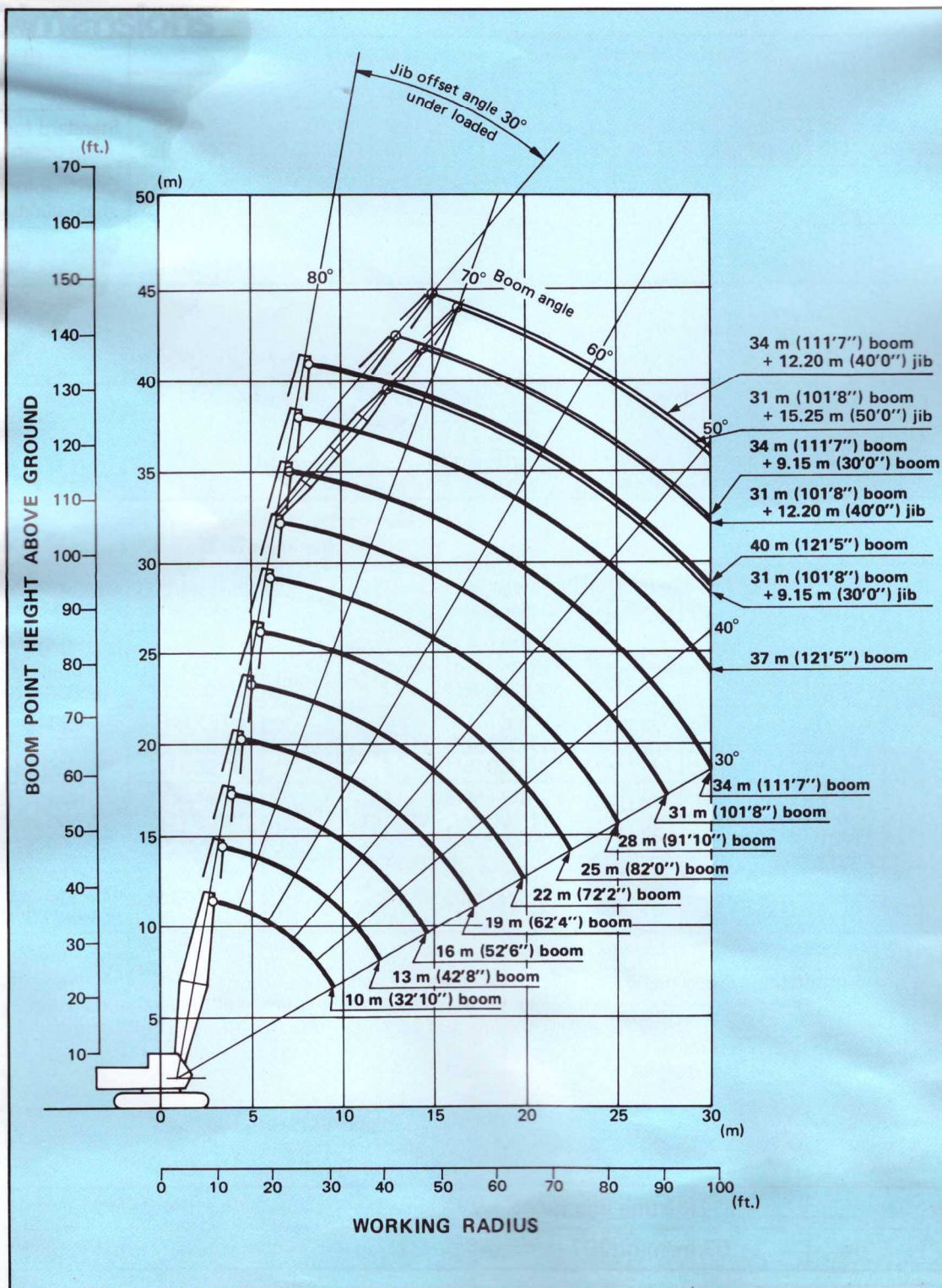




www.hitachi.com

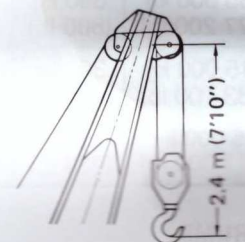
# CRAWLER CRANE

## Working Ranges



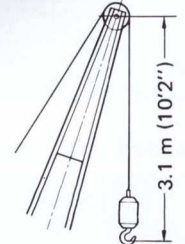
### Hook Clearance

Boom



35 000 kg (77 200 lb)  
Capacity hook

Jib



5 000 kg (11 000 lb)  
Capacity hook

BOOM LENGTH	WORKING RADIUS		BOOM ANGLE	BOOM POINT HEIGHT		RATED LOAD	
	m (ft in)	m ft in		m ft in	m ft in	PCSA	RATING
	m	ft in	degree	m	ft in	kg	lb
34.0 (111' 7")	8.0	26' 3"	78.35	34.8	114' 2"	9 800	21 600
	9.0	29' 6"	76.62	34.5	113' 2"	8 300	18 200
	10.0	32' 10"	74.88	34.3	112' 6"	7 150	15 700
	12.0	39' 4"	71.35	33.6	110' 3"	5 550	12 200
	14.0	45' 11"	67.74	32.9	107' 11"	4 400	9 700
	16.0	52' 6"	64.04	32.0	105' 0"	3 600	7 930
	18.0	59' 1"	60.21	30.9	101' 5"	3 000	6 610
	20.0	65' 7"	56.23	29.6	97' 1"	2 550	5 620
	22.0	72' 2"	52.05	28.2	92' 6"	2 150	4 730
	24.0	78' 9"	47.61	26.5	86' 11"	1 850	4 070
	26.0	85' 4"	42.82	24.4	80' 1"	1 600	3 520
	28.0	91' 10"	37.56	22.0	72' 2"	1 400	3 080
	30.0	98' 5"	31.55	19.1	62' 8"	1 200	2 640
	30.4	99' 9"	30.22	18.4	60' 4"	1 100	2 420
37.0 (121' 5")	8.0	26' 3"	79.31	37.8	124' 0"	9 800	21 600
	9.0	29' 6"	77.73	37.6	123' 4"	8 300	18 200
	10.0	32' 10"	76.13	37.4	122' 9"	7 150	15 700
	12.0	39' 4"	72.91	36.8	120' 9"	5 500	12 100
	14.0	45' 11"	69.64	36.1	118' 5"	4 400	9 700
	16.0	52' 6"	66.29	35.3	115' 10"	3 600	7 930
	18.0	59' 1"	62.85	34.3	112' 6"	3 000	6 610
	20.0	65' 7"	59.29	33.2	108' 11"	2 500	5 510
	22.0	72' 2"	55.60	31.9	104' 8"	2 100	4 620
	24.0	78' 9"	51.74	30.4	99' 9"	1 800	3 960
	26.0	85' 4"	47.66	28.7	94' 2"	1 550	3 410
	28.0	91' 10"	43.28	26.7	87' 7"	1 350	2 970
	30.0	98' 5"	38.51	24.4	80' 1"	1 150	2 530
	32.0	105' 0"	33.18	21.6	70' 10"	1 000	2 200
40.0 (131' 3")	9.0	29' 6"	78.66	40.7	133' 6"	8 200	18 000
	10.0	32' 10"	77.19	40.5	132' 11"	7 050	15 500
	12.0	39' 4"	74.23	39.9	130' 11"	5 400	11 900
	14.0	45' 11"	71.23	39.3	128' 11"	4 300	9 470
	16.0	52' 6"	68.17	38.6	126' 8"	3 500	7 710
	18.0	59' 1"	65.04	37.7	123' 8"	2 900	6 390
	20.0	65' 7"	61.82	36.7	120' 5"	2 400	5 290
	22.0	72' 2"	58.51	35.5	116' 6"	2 050	4 510
	24.0	78' 9"	55.07	34.2	112' 3"	1 700	3 740
	26.0	85' 4"	51.48	32.7	107' 3"	1 450	3 190
	28.0	91' 10"	47.70	30.9	101' 5"	1 250	2 750
	30.0	98' 5"	43.67	29.0	95' 2"	1 050	2 310
32.0	105' 0"	39.31	26.7	87' 7"	900	1 980	

## Rated Load for Main Boom

### Notes:

- The rated loads shown are based on the machine on firm level ground without traveling.
- The rated loads shown include the weights of all lifting attachments, such as hook and bucket. The load to be actually lifted is the rated load minus the weight of all lifting attachments.
- When the jib or the auxiliary jib is attached, the load to be actually lifted is the rated load minus the weight listed below.

Jib length	6.10 m (20'0")	9.15 m (30'0")	12.2 m (40'0")	15.25 m (50'0")	Aux. Jib
Weight to be reduced	700 kg (1 540 lb)	850 kg (1 870 lb)	1 000 kg (2 200 lb)	1 150 kg (2 540 lb)	200 kg (440 lb)

- The jib can be attached to boom of 19.0 m (62'4") to 34.0 m (111'7") long.
- The auxiliary jib can be attached to boom of 10.0 m (32'10") to 37.0 m (121'5") long.

- The rated load for auxiliary jib is equal to that of main boom at the same working radius, but do not exceed maximum rated load 5 000 kg (11 000 lb).
- Counterweight is 11 600 kg (25 600 lb).
- In operation, crawlers must be extended.

## Rated Load for Jib

### Maximum jib rating

Jib length	6.10 m (20'0")	9.15 m (30'0")	12.2 m (40'0")	15.25 m (50'0")
Max. rated load	5 000 kg (11 000 lb)	4 100 kg (9 040 lb)	3 200 kg (7 050 lb)	2 300 kg (5 070 lb)

### Notes:

- The rated load for jib is equal to that of the main boom at the same working radius, but should not exceed maximum jib ratings shown.  
The jib offset angle to the main boom is 30° under loaded condition.
- The maximum working radius of the jib do not exceed that of the main boom used.

BOOM LENGTH	WORKING RADIUS		BOOM ANGLE	BOOM POINT HEIGHT		RATED	LOAD	
	m	ft in		m	ft in		PCSA	RATING
m (ft in)	m	ft in	degree	m	ft in		kg	lb
19.0 (62' 4")	4.5	14' 9"	79.80	20.2	66' 3"		23 150	51 000
	5.0	16' 5"	78.26	20.1	65' 11"		19 700	43 400
	6.0	19' 8"	75.15	19.8	65' 0"		15 100	33 200
	7.0	23' 0"	72.00	19.5	64' 0"		12 150	26 700
	8.0	26' 3"	68.78	19.1	62' 8"		10 150	22 300
	9.0	29' 6"	65.49	18.7	61' 4"		8 650	19 000
	10.0	32' 10"	62.11	18.2	59' 9"		7 500	16 500
	12.0	39' 4"	54.98	16.9	55' 5"		5 900	13 000
	14.0	45' 11"	47.14	15.3	50' 2"		4 800	10 500
	16.0	52' 6"	38.10	13.0	42' 8"		4 000	8 810
17.4	57' 1"	30.46	10.9	35' 9"		3 550	7 820	
22.0 (72' 2")	5.0	16' 5"	79.88	23.1	75' 9"		19 650	43 300
	6.0	19' 8"	77.22	22.9	75' 2"		15 050	33 100
	7.0	23' 0"	74.53	22.6	74' 2"		12 100	26 600
	8.0	26' 3"	71.80	22.3	73' 2"		10 050	22 100
	9.0	29' 6"	69.02	22.0	72' 2"		8 600	18 900
	10.0	32' 10"	66.19	21.5	70' 6"		7 450	16 400
	12.0	39' 4"	60.33	20.5	67' 3"		5 800	12 700
	14.0	45' 11"	54.08	19.2	63' 0"		4 700	10 300
	16.0	52' 6"	47.29	17.5	57' 5"		3 950	8 700
	18.0	59' 1"	39.62	15.4	50' 6"		3 350	7 380
20.0	65' 7"	30.38	12.4	40' 8"		2 850	6 280	
25.0 (82' 0")	6.0	19' 8"	78.78	26.0	85' 4"		15 000	33 000
	7.0	23' 0"	76.43	25.8	84' 8"		12 050	26 500
	8.0	26' 3"	74.05	25.5	83' 8"		10 000	22 000
	9.0	29' 6"	71.65	25.2	82' 8"		8 500	18 700
	10.0	32' 10"	69.20	24.8	81' 4"		7 400	16 300
	12.0	39' 4"	64.19	23.9	78' 5"		5 750	12 600
	14.0	45' 11"	58.95	22.8	74' 10"		4 650	10 200
	16.0	52' 6"	53.39	21.4	70' 3"		3 850	8 480
	18.0	59' 1"	47.40	19.7	64' 8"		3 250	7 160
	20.0	65' 7"	40.73	17.6	57' 9"		2 800	6 170
22.0	72' 2"	32.99	14.9	48' 11"		2 400	5 290	
22.6	74' 2"	30.33	13.9	45' 7"		2 300	5 070	
28.0 (91' 10")	6.0	19' 8"	80.00	29.0	95' 2"		14 900	32 800
	7.0	23' 0"	77.91	28.8	94' 6"		11 950	26 300
	8.0	26' 3"	75.80	28.6	93' 10"		9 900	21 800
	9.0	29' 6"	73.68	28.3	92' 10"		8 450	18 600
	10.0	32' 10"	71.53	28.0	91' 10"		7 300	16 000
	12.0	39' 4"	67.14	27.2	89' 3"		5 650	12 400
	14.0	45' 11"	62.60	26.3	86' 3"		4 550	10 000
	16.0	52' 6"	57.86	25.1	82' 4"		3 750	8 260
	18.0	59' 1"	52.85	23.7	77' 9"		3 150	6 940
	20.0	65' 7"	47.48	22.0	72' 2"		2 700	5 950
22.0	72' 2"	41.59	19.9	65' 4"		2 300	5 070	
24.0	78' 9"	34.91	17.3	56' 9"		2 000	4 400	
25.2	82' 8"	30.28	15.4	50' 6"		1 850	4 070	
31.0 (101' 9")	7.0	23' 0"	79.10	31.9	104' 8"		11 900	26 200
	8.0	26' 3"	77.20	31.7	104' 0"		9 900	21 800
	9.0	29' 6"	75.30	31.4	103' 0"		8 400	18 500
	10.0	32' 10"	73.37	31.1	102' 0"		7 250	15 900
	12.0	39' 4"	69.46	30.5	100' 1"		5 600	12 300
	14.0	45' 11"	65.45	29.6	97' 1"		4 500	9 920
	16.0	52' 6"	61.29	28.6	93' 10"		3 700	8 150
	18.0	59' 1"	56.97	27.4	89' 11"		3 100	6 830
	20.0	65' 7"	52.41	25.9	85' 0"		2 650	5 840
	22.0	72' 2"	47.55	24.2	79' 5"		2 250	4 960
24.0	78' 9"	42.27	22.2	72' 10"		1 950	4 290	
26.0	85' 4"	36.38	19.7	64' 8"		1 700	3 740	
27.8	91' 3"	30.25	16.9	55' 5"		1 500	3 300	

# Crane Ratings


## BS Rating:

The rated loads are determined according to BS (British Standard; 1981) on condition that the machine is stationed on firm, level ground.

## PCSA Rating:

The rated loads listed are determined according to PCSA (Power Crane and Shovel Association in U.S.A.) and do not exceed 75% of tipping load on condition that the machine is stationed on firm, level ground.

## Tubular Chord Crane Boom in 360° Working Area with Fully Extended Side Frames

Continued 

BOOM LENGTH	WORKING	RADIUS	BOOM ANGLE	BOOM POINT HEIGHT		RATED LOAD	
						PCSA RATING	
						kg	lb
10.0 (32'10")	3.0	9'10"	79.26	11.3	37' 1"	35 000	77 100
	3.5	11' 6"	76.31	11.2	36' 9"	35 000	77 100
	3.6	11'10"	75.71	11.1	36' 5"	33 650	74 100
	3.7	12' 2"	75.12	11.1	36' 5"	32 100	70 700
	4.0	13' 1"	73.32	11.0	36' 1"	28 150	62 000
	4.5	14' 9"	70.28	10.8	35' 5"	23 350	51 400
	5.0	16' 5"	67.18	10.6	34' 9"	19 900	43 800
	6.0	19' 8"	60.72	10.1	33' 2"	15 300	33 700
	7.0	23' 0"	53.80	9.4	30'10"	12 400	27 300
	8.0	26' 3"	46.16	8.6	28' 3"	10 350	22 800
	9.0	29' 6"	37.30	7.4	24' 3"	8 900	19 600
9.6	31' 6"	30.95	6.4	21' 0"	8 100	17 800	
13.0 (42'8")	3.5	11' 6"	79.52	14.2	46' 7"	35 000	77 100
	3.6	11'10"	79.07	14.2	46' 7"	33 600	74 000
	3.7	12' 2"	78.62	14.2	46' 7"	32 050	70 600
	4.0	13' 1"	77.26	14.1	46' 3"	28 100	61 900
	4.5	14' 9"	74.98	14.0	45'11"	23 250	51 200
	5.0	16' 5"	72.68	13.8	45' 3"	19 800	43 600
	6.0	19' 8"	67.96	13.5	44' 4"	15 200	33 500
	7.0	23' 0"	63.08	13.0	42' 8"	12 300	27 100
	8.0	26' 3"	57.96	12.4	40' 8"	10 250	22 500
	9.0	29' 6"	52.52	11.7	38' 5"	8 800	19 400
	10.0	32'10"	46.64	10.8	35' 5"	7 650	16 800
	12.0	39' 4"	32.44	8.3	27' 3"	6 050	13 300
12.2	40' 0"	30.71	7.9	25'11"	5 900	13 000	
16.0 (52'6")	4.0	13' 1"	79.69	17.2	56' 5"	28 050	61 800
	4.5	14' 9"	77.86	17.1	56' 1"	23 200	51 100
	5.0	16' 5"	76.01	17.0	55' 9"	19 750	43 500
	6.0	19' 8"	72.27	16.7	54'10"	15 150	33 400
	7.0	23' 0"	68.45	16.3	53' 6"	12 200	26 800
	8.0	26' 3"	64.52	15.9	52' 2"	10 200	22 400
	9.0	29' 6"	60.45	15.3	50' 2"	8 700	19 100
	10.0	32'10"	56.20	14.7	48' 3"	7 550	16 600
	12.0	39' 4"	46.94	13.0	42' 8"	5 950	13 100
	14.0	45'11"	35.91	10.7	35' 1"	4 850	10 600
	14.8	48' 7"	30.56	9.4	30'10"	4 500	9 920